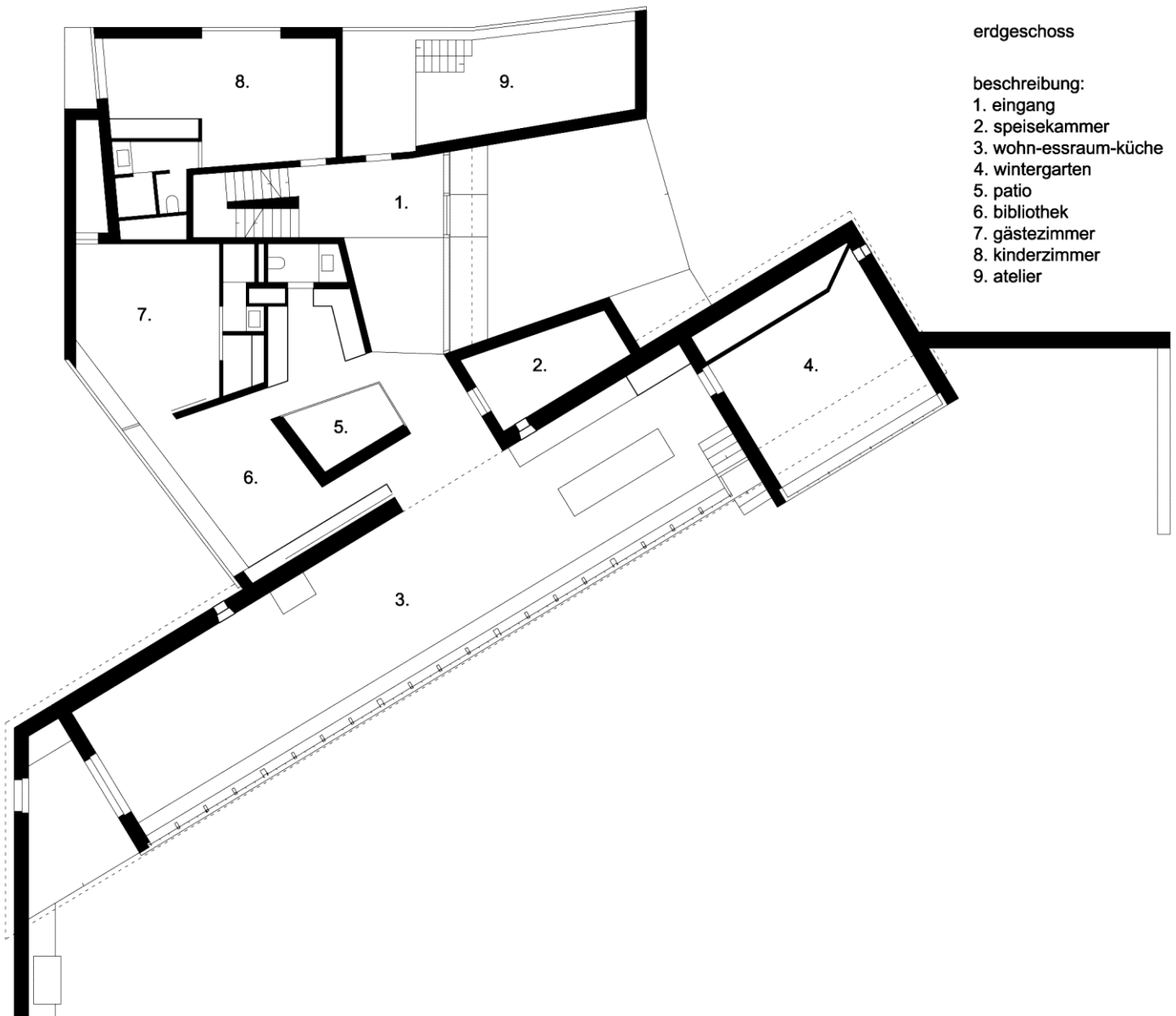


Erdgeschoss

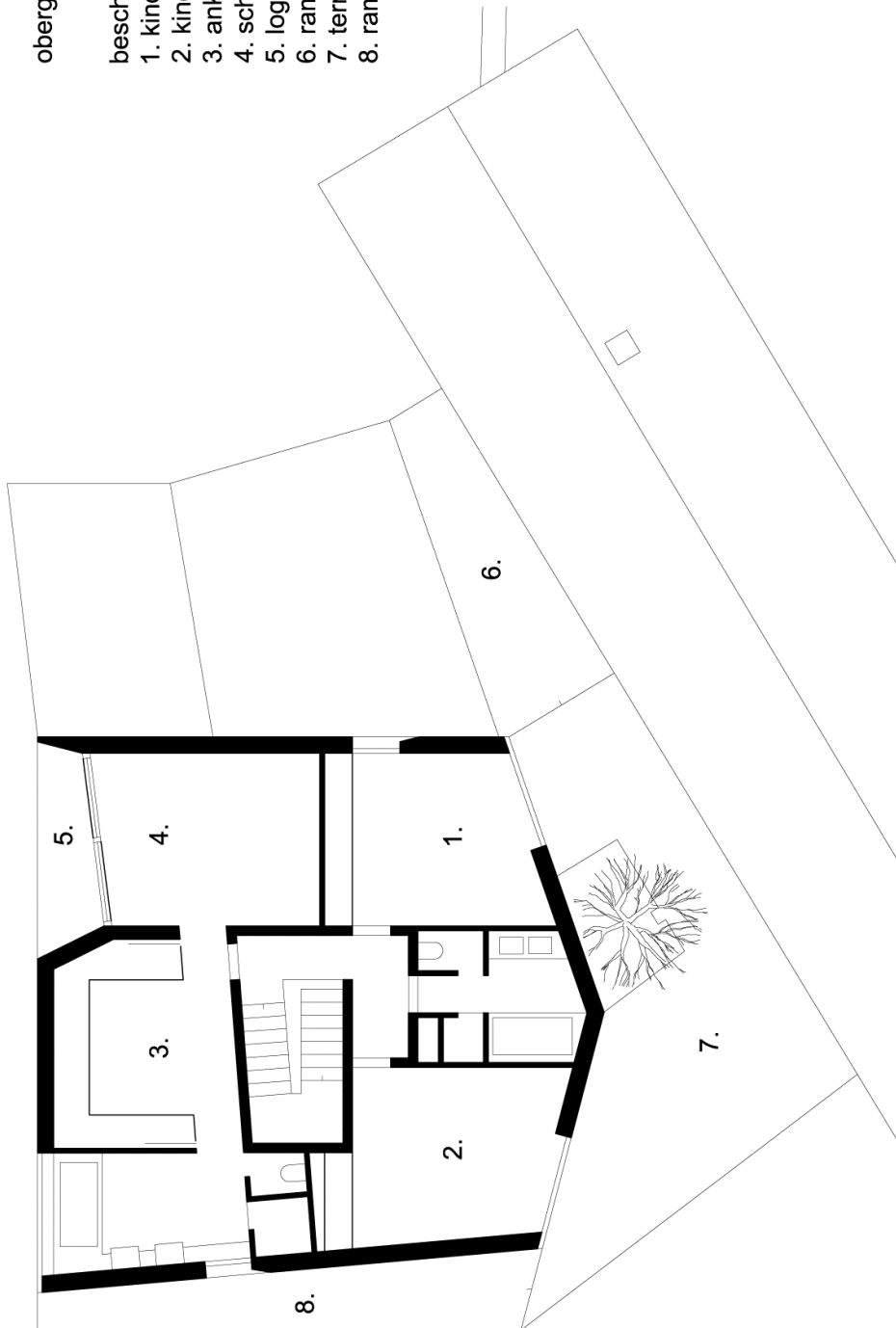


Obergeschoss

obergeschoss

beschreibung:

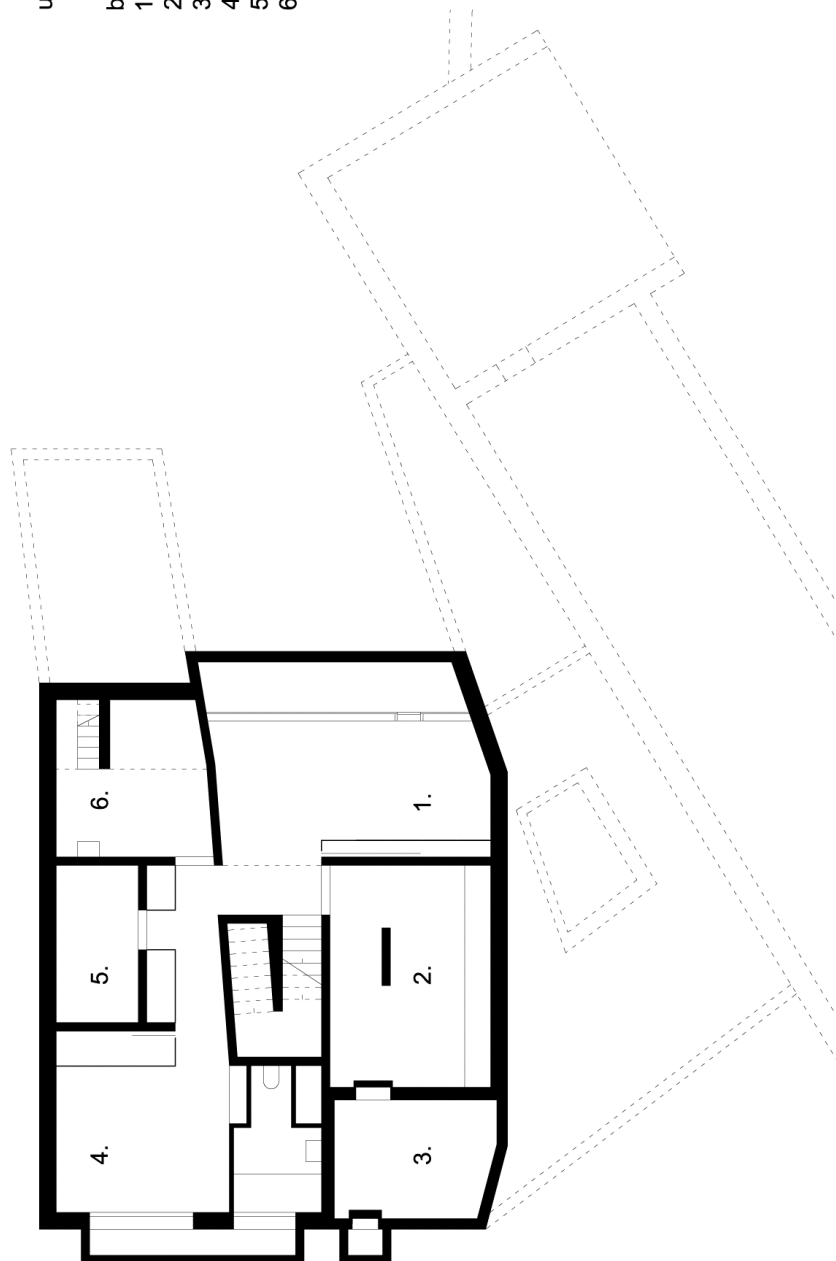
1. kinderzimmer
2. kinderzimmer
3. ankleide
4. schlafzimmer
5. loggia
6. rampe
7. terrasse
8. rampe



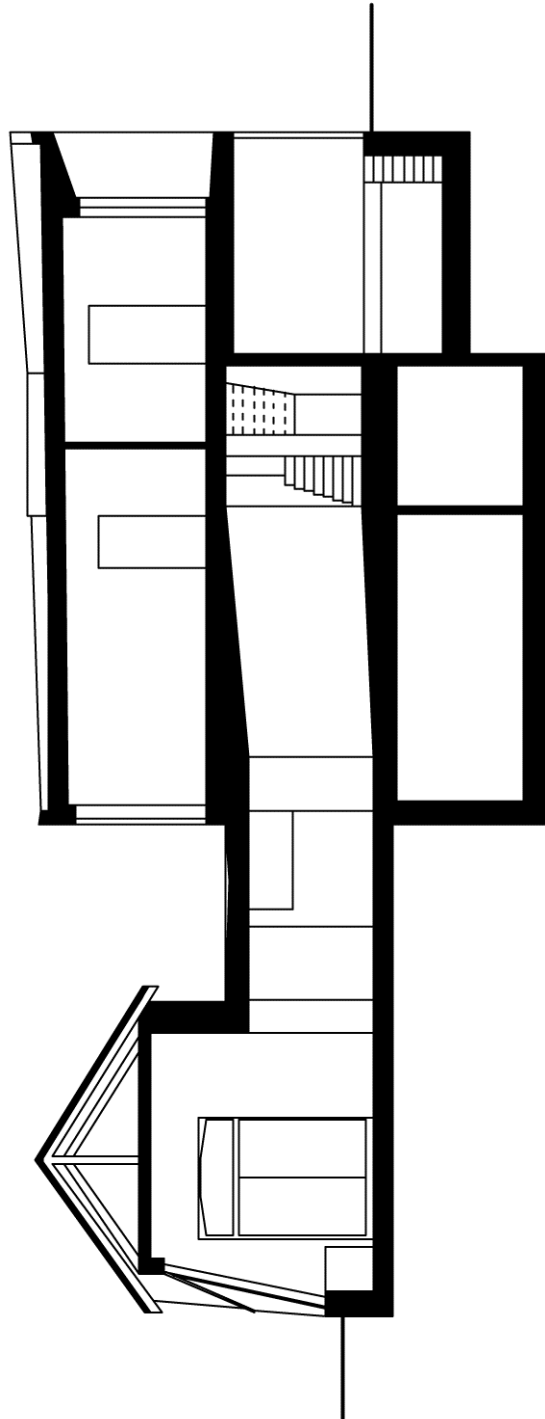
Untergeschoss

untergeschoss

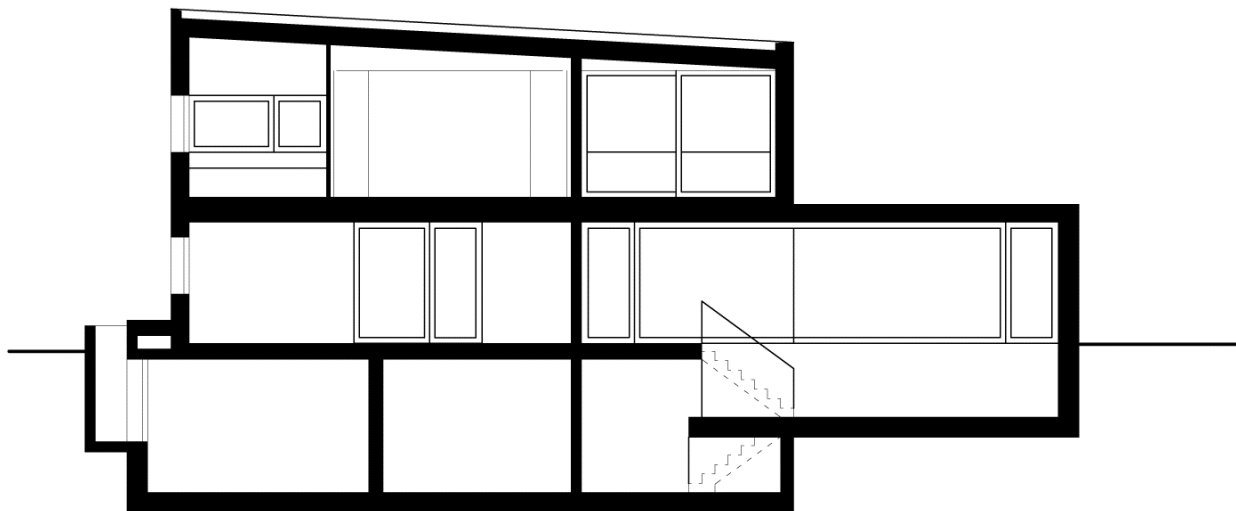
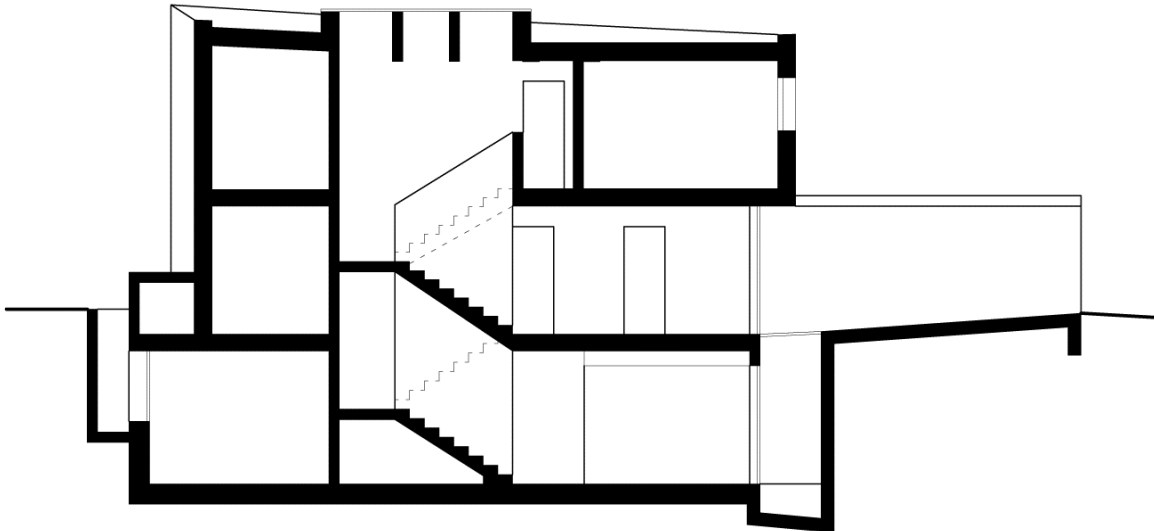
- beschreibung:
1. arbeitszimmer
2. technikraum
3. keller
4. gästezimmer
5. weinkeller
6. atelier



Schnitt



Schnitte



Lageplan

