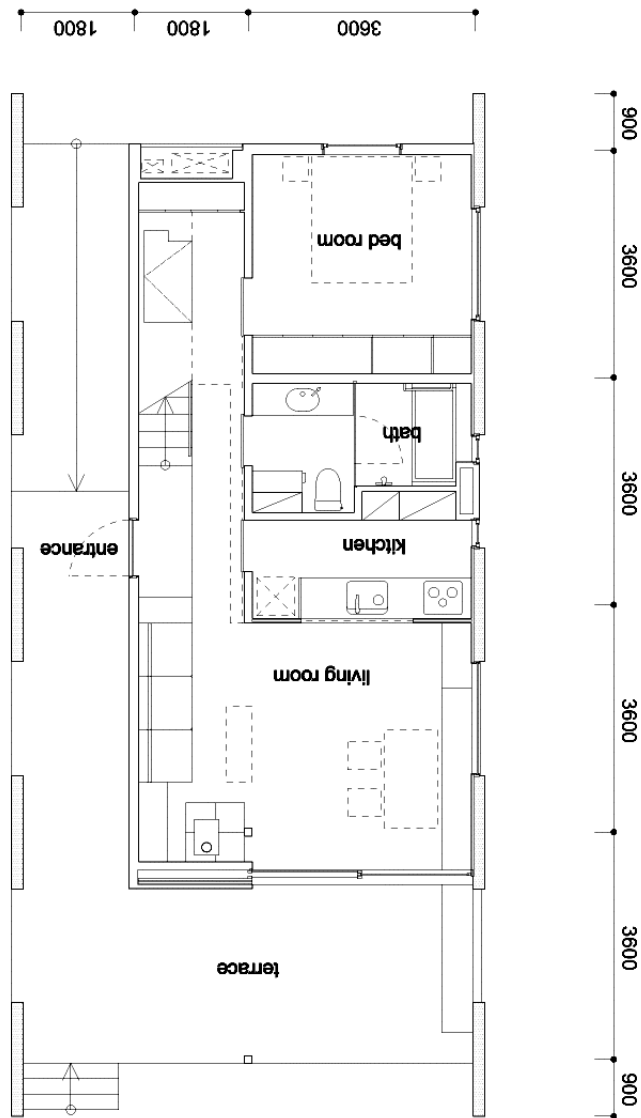


Bashamichi Otsu Bldg. 3F
Minami Nakadori 4-43
Naka-ku, Yokohama Kanagawa-ken 231-0006
Japan, Tel. +81-45-651 76 70,
www.iida-arc.com

Erdgeschoss

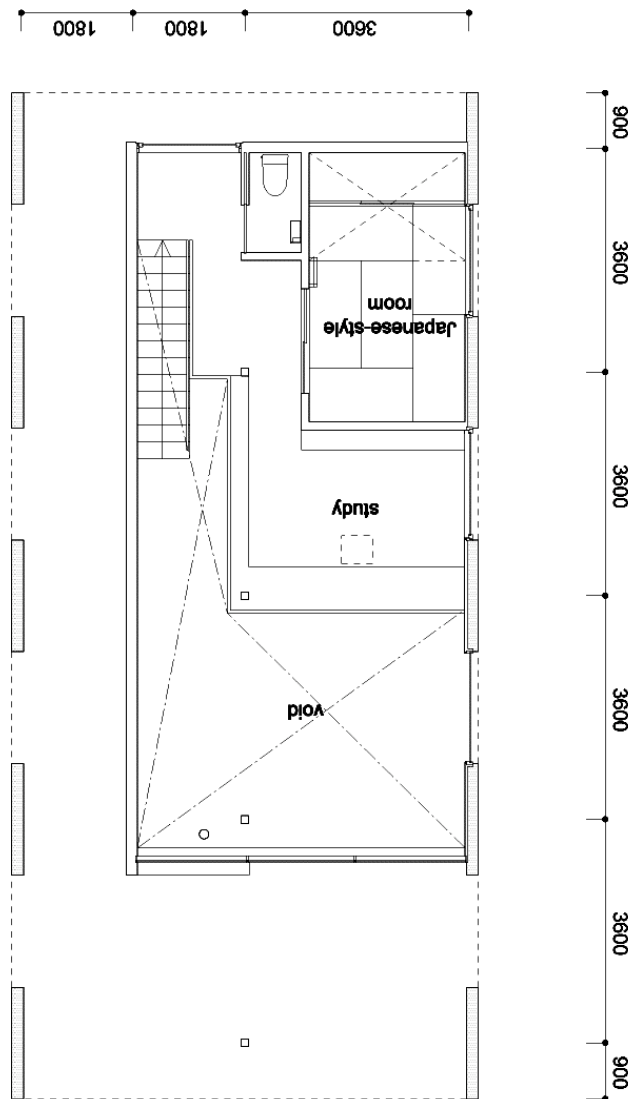
ground floor plan
S=1:100(A4)



Bashamichi Otsu Bldg. 3F
Minami Nakadori 4-43
Naka-ku, Yokohama Kanagawa-ken 231-0006
Japan, Tel. +81-45-651 76 70,
www.iida-arc.com

1.Obergeschoss

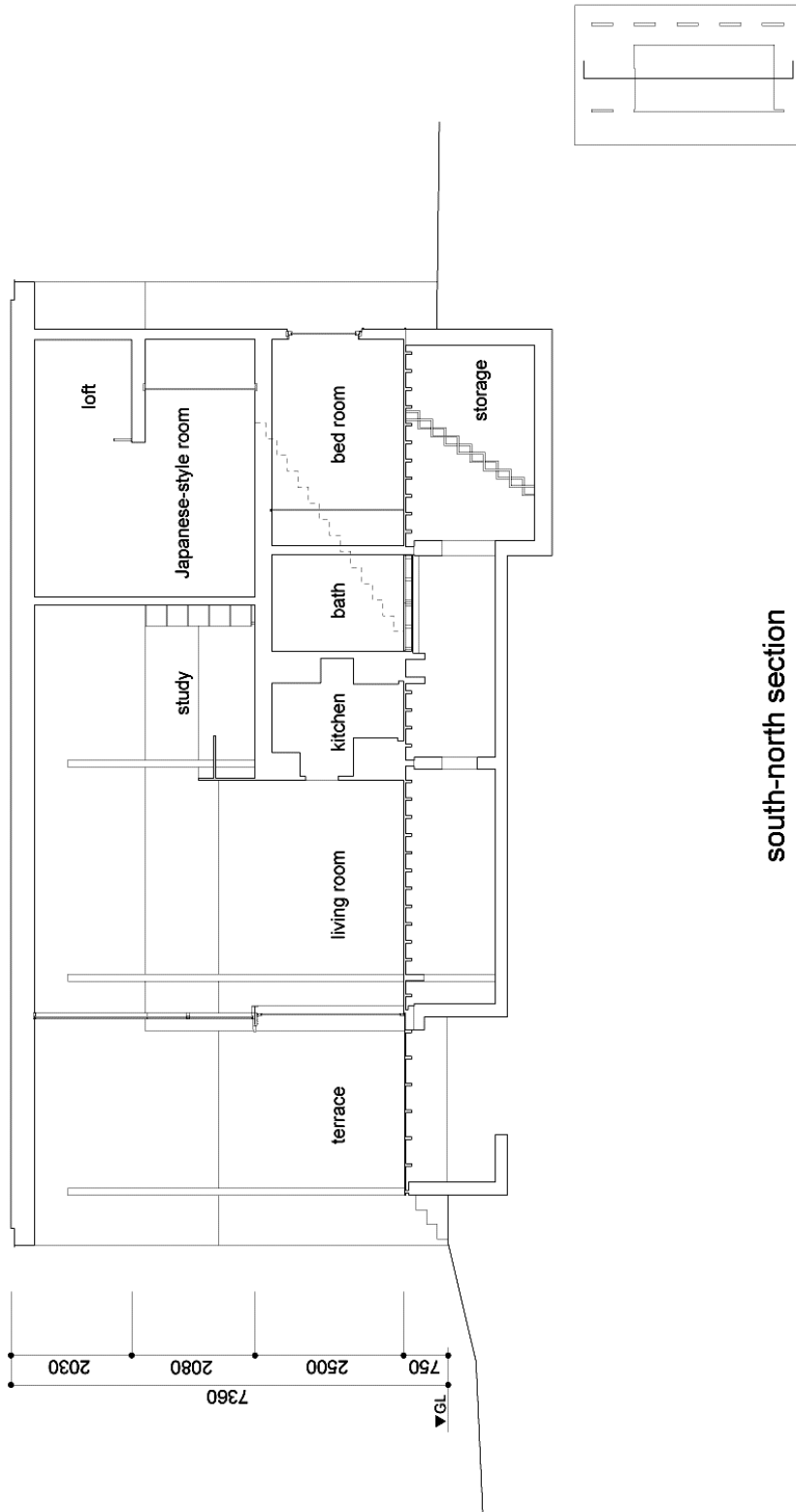
first floor plan
S=1:100(A4)



Bashamichi Otsu Bldg. 3F
Minami Nakadori 4-43
Naka-ku, Yokohama Kanagawa-ken 231-0006
Japan, Tel. +81-45-651 76 70,
www.iida-arc.com

Schnitt
Nord Süd

S=1:100(A4)

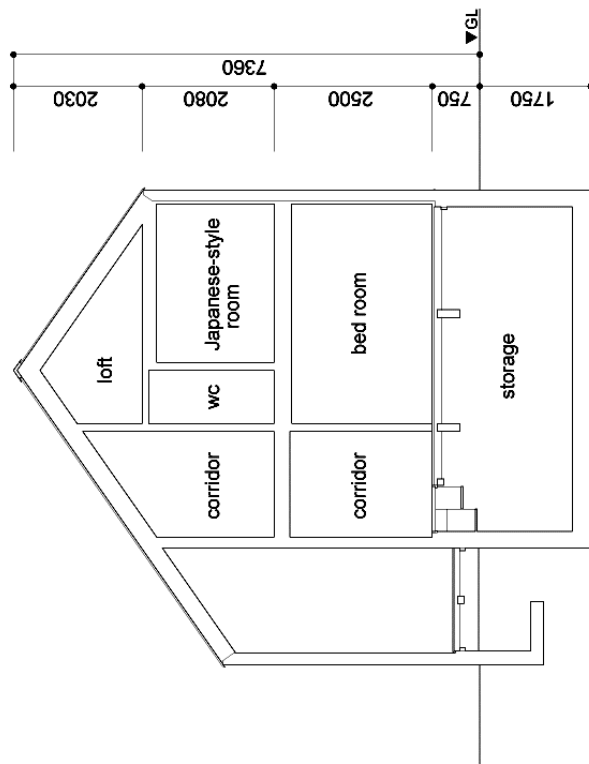
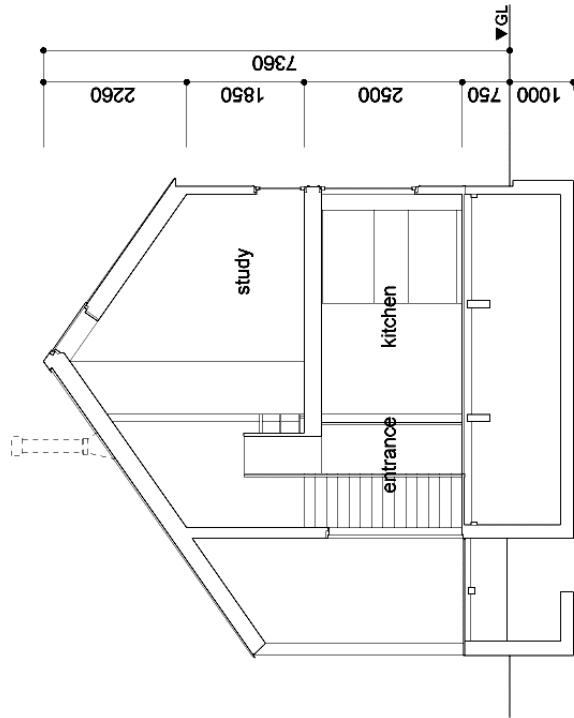


south-north section

Bashamichi Otsu Bldg. 3F
Minami Nakadori 4-43
Naka-ku, Yokohama Kanagawa-ken 231-0006
Japan, Tel. +81-45-651 76 70,
www.iida-arc.com

Schnitt
West Ost

S=1:100(A4)

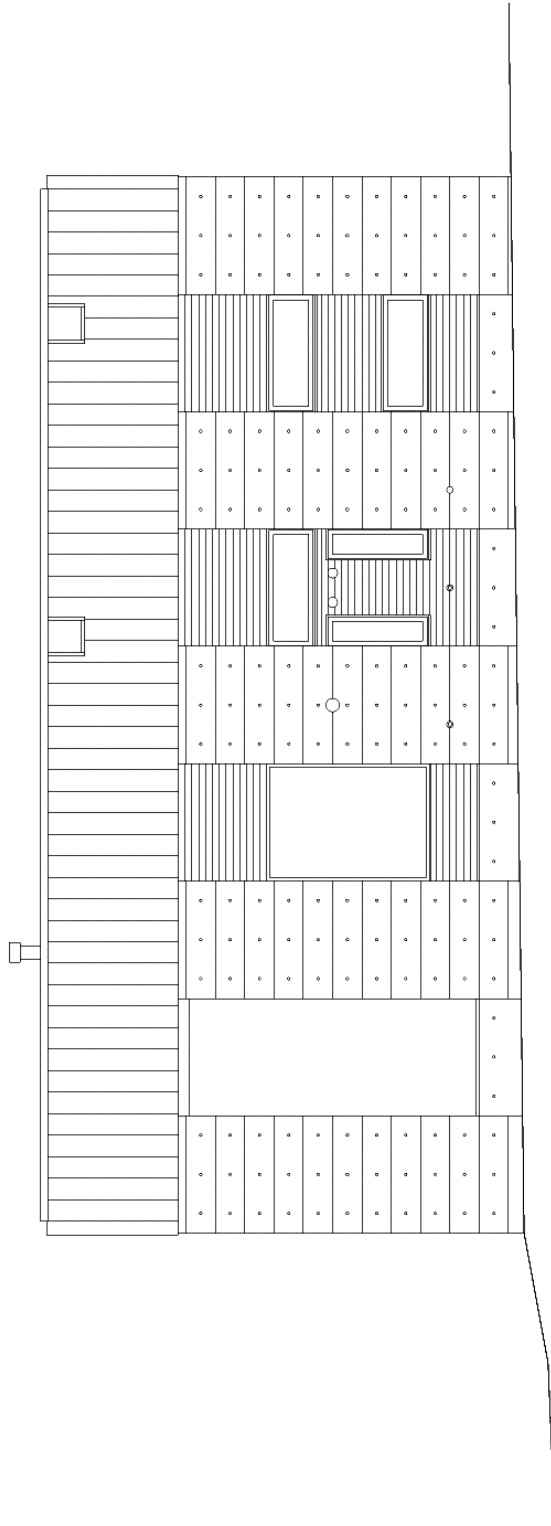


east-west section

Bashamichi Otsu Bldg. 3F
Minami Nakadori 4-43
Naka-ku, Yokohama Kanagawa-ken 231-0006
Japan, Tel. +81-45-651 76 70,
www.iida-arc.com

Ansicht
Ost

S=1:100(A4)

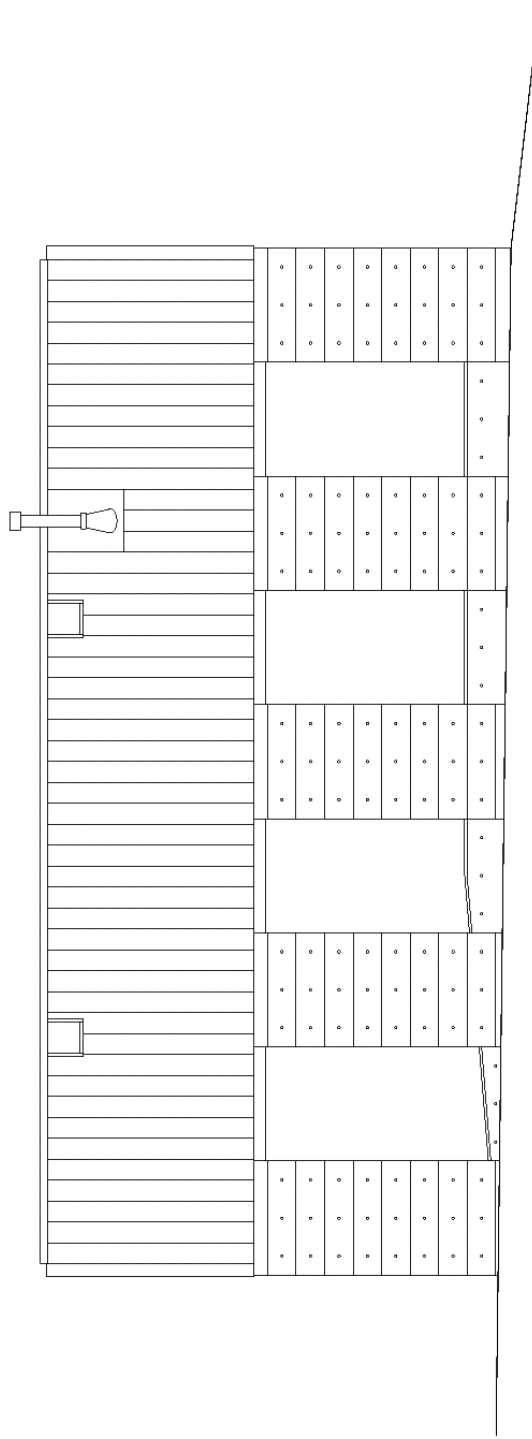


east elevation

Bashamichi Otsu Bldg. 3F
Minami Nakadori 4-43
Naka-ku, Yokohama Kanagawa-ken 231-0006
Japan, Tel. +81-45-651 76 70,
www.iida-arc.com

**Ansicht
West**

S=1 : 100 (A4)



west elevation

Bashamichi Otsu Bldg. 3F
Minami Nakadori 4-43
Naka-ku, Yokohama Kanagawa-ken 231-0006
Japan, Tel. +81-45-651 76 70,
www.iida-arc.com

Lageplan

site plan
S=1:400(A4)

